

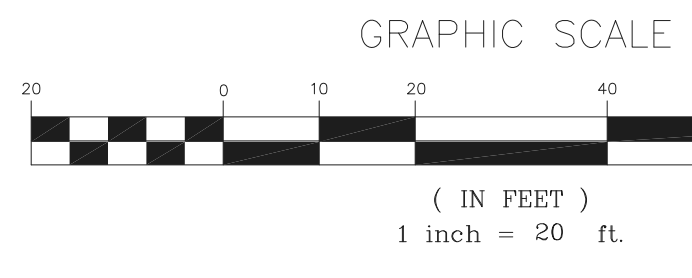
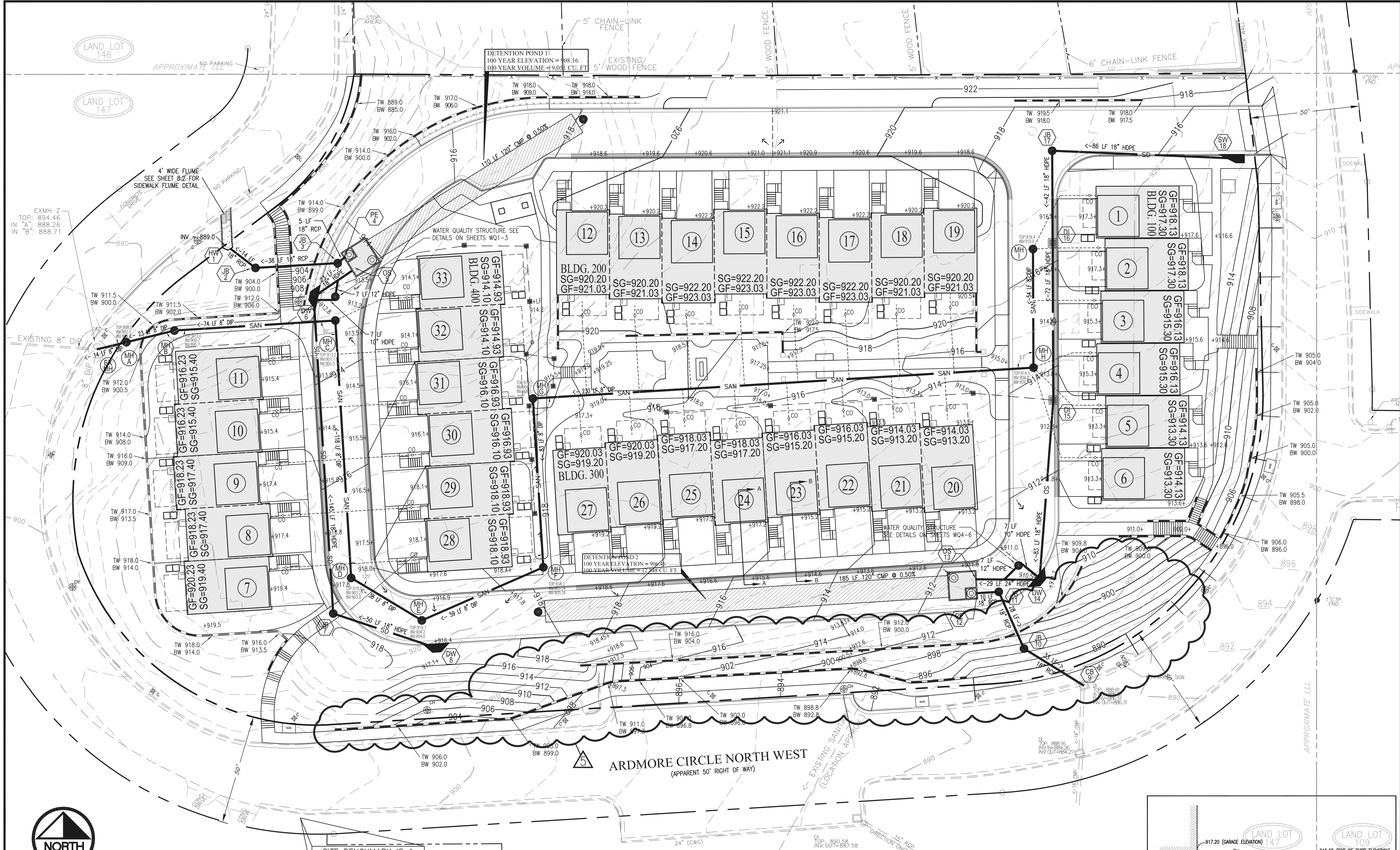
**Summit**  
Engineering Consultants, Inc.  
520 Alpharetta Court, Suite 500  
Alpharetta, GA 30005  
(770) 667-0094, (770) 667-0095

**PULTE HOMES, INC.**  
2475 NORTHWINDS PARKWAY  
SUITE 525  
ALPHARETTA, GEORGIA 30009  
OFFICE: 770-381-3450

| Date    | Revision Schedule                   |
|---------|-------------------------------------|
| 4/1/10  | 1. ADDRESS CITY OF ATLANTA COMMENTS |
| 4/27/10 | 2. PRICING SET                      |
| 5/10/10 | 3. ADDRESS DEVELOPER COMMENTS       |
| 6/11/10 | 4. REVISED RETAINING WALL DESIGN    |

**GRADING AND DRAINAGE PLAN**  
**BROOKWOOD HEIGHTS AT ARDMORE**  
301 ARDMORE CIRCLE, N.W.  
LAND LOT 147, 17th DISTRICT  
CITY OF ATLANTA, FULTON COUNTY, GEORGIA

Drawing No. **3.0**  
S-09-019con.dwg



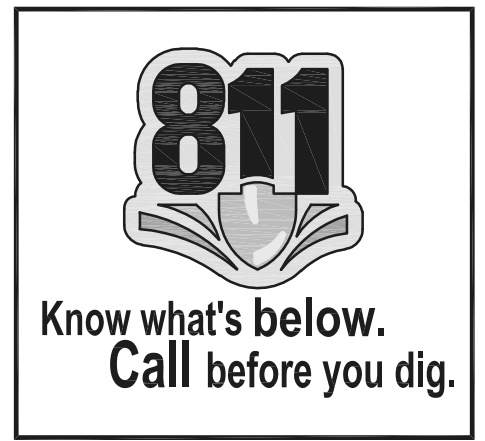
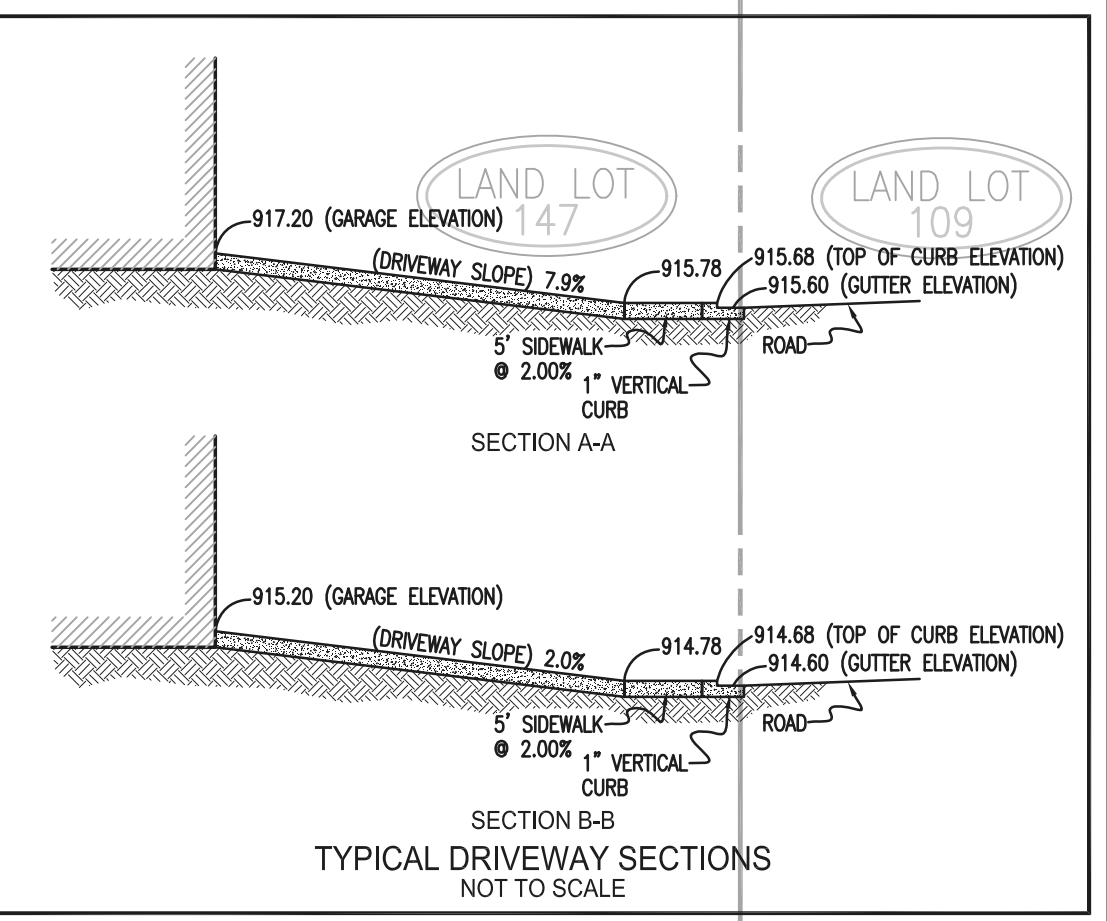
SITE BENCHMARK IS A FLANGE BOLT BETWEEN CITY & STATE ELEV=905.02

**\*\*\*CAUTION\*\*\***  
THE UTILITIES SHOWN HEREON ARE FOR THE CONTRACTORS CONVENIENCE ONLY. THERE MAY BE OTHER UTILITIES NOT SHOWN ON THESE PLANS. THE ENGINEER ASSUMES NO RESPONSIBILITY FOR THE LOCATIONS SHOWN AND IT SHALL BE THE CONTRACTOR'S RESPONSIBILITY TO VERIFY ALL UTILITIES WITHIN THE LIMITS OF THE WORK. ALL DAMAGE MADE TO EXISTING UTILITIES BY THE CONTRACTOR SHALL BE THE SOLE RESPONSIBILITY OF THE CONTRACTOR.

**DIRT STATEMENT:**  
APPROXIMATELY 427 C.Y. OF DIRT TO BE HAULED FROM SITE.  
CUT = 12,632 CU. YDS.  
FILL = 12,205 CU. YDS.

- NOTES**
- NO GRADED SLOPE SHALL EXCEED 2h:1v.
  - AT ALL POINTS ALONG THE PUBLIC RIGHT OF WAY WHERE THE EXISTING CURB HEIGHT IS LESS THAN 5 INCHES HIGH, THE EXISTING CURB SHALL BE REMOVED AND REPLACED OR RESET TO MINIMUM CITY OF ATLANTA REQUIREMENTS AND THE SIDEWALK REPLACED.

- LEGEND**
- GF FINISHED GROUND FLOOR ELEVATION
  - SG SUBGRADE ELEVATION
  - EX EXISTING
  - SW SINGLE WITH CATCH BASIN (DETAIL ON SHT. 8.0)
  - DW DOUBLE WITH CATCH BASIN (DETAIL ON SHT. 8.0)
  - DI DROP INLET (DETAIL ON SHT. 8.0)
  - HW HEADWALL (DETAIL ON SHT. 8.1)
  - CO SANITARY SEWER CLEANOUT (DETAIL ON SHT. 8.1)
  - MH SANITARY SEWER MANHOLE (DETAIL ON SHT. 8.0)
  - TW TOP OF WALL
  - BW BOTTOM OF WALL (AT PROPOSED GRADE)



24 HOUR CONTACT: MATT WILLIAMS 770-381-3450